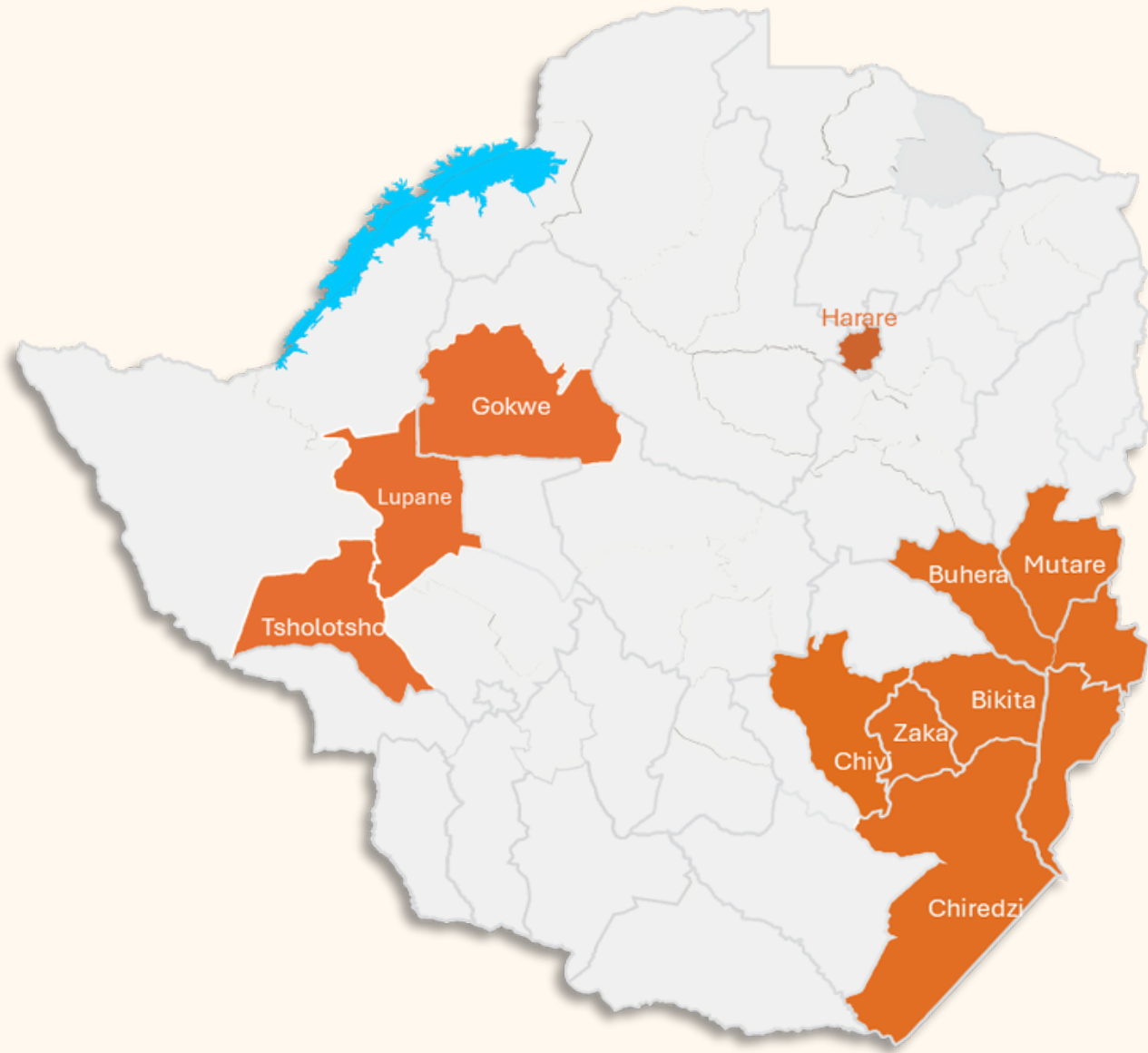


CARE ZIMBABWE ANNUAL REPORT

20 25



WHERE WE WORK



12
Projects

9
Districts

3
Provinces

ABOUT CARE ZIMBABWE

Who We Are

CARE is a global leader within a worldwide movement dedicated to eradicating poverty. We are known everywhere for our unshakeable commitment to the dignity of people.

Mission

CARE works around the globe to save lives, defeat poverty, and achieve social justice.

Vision

We seek a world of hope, inclusion, and social justice, where poverty has been overcome and all people live with dignity and security.

Our Focus

We put women and girls at the centre, because we know we cannot overcome poverty until all people have equal rights and opportunities.

Our Work in Zimbabwe

CARE has been actively engaged in Zimbabwe since 1992, striving to improve the lives of vulnerable households by fostering sustainable livelihoods through a combination of short-term and long-term programs. By forming strategic partnerships with other organizations and institutions, CARE Zimbabwe implements initiatives that empower these households to meet their needs.

Our operations span four provinces in Zimbabwe: Masvingo, Manicaland, Matabeleland South, and Matabeleland North. We prioritize programs that focus on sustainable agriculture and resilience building, weather adaptation, integrated water, sanitation, and hygiene (WASH), women's economic empowerment (WEE), youth empowerment, child participation, education, disaster preparedness and risk reduction (DRR), humanitarian response, women's economic empowerment, food security, nutrition, and addressing sexual reproductive health and rights (SRHR) and violence against women and girls (VAWG).



Happy Faces: Tafara Bakery Group from Ward 19, Zaka Rural District, has used profits from sales to buy goats for each member. The group is also part of a Village Savings and Loan Association (VSLA) and this is helping them to access capital to boost their Income Generating Activities (IGA) and reinvest their profits.



MESSAGE FROM THE COUNTRY DIRECTOR

Walter Mwasaa
Country Director, CARE Zimbabwe

FY25 was a year of resilience and renewal for CARE Zimbabwe. Despite significant challenges—including a depressed funding ecosystem, our team remained steadfast in its mission to support communities and sustain impact. Through transparent communication, rigorous compliance, and the strength of our community led developed we ensured continuity of essential services while reinforcing locally led solutions and community ownership.

We are inspired by the tangible impact of our work. Village Business Units (VBUs), established just two years ago, have generated nearly US\$ 91 000, demonstrating the power of community-driven enterprise. One widow's story stands out: she shared that her participation in a community garden restored her dignity and ability to provide for her children, saying it felt as though she is no longer a widow. These stories reflect the tenacity and resilience of our staff and the enduring trust placed in us by the communities we serve.

In FY25, we deepened partnerships with government, local organizations, and the private sector, aligning our work with Zimbabwe's National Development Strategy. Collaborations with private sector actors such as Ecobank and Stanbic Bank advanced women's economic empowerment, menstrual health, and sustainable agriculture.

The guidance of our Advisory Committee helped us navigate funding shifts and expand our reach to new areas such as Beitbridge. We also reaffirmed our commitment to transparency and accountability under the new Private Voluntary Organizations (PVO) Act, ensuring CARE Zimbabwe remains a trusted and compliant partner.

Looking ahead, our focus is on building resilient futures for women, girls, and youth through disaster and weather proof and inclusive programming. We remain deeply grateful to our donors, government partners, the private sector, and our dedicated team for their unwavering commitment. Together, we continue working toward a more equitable and prosperous Zimbabwe for all.

Walter Mwasaa
Country Director, CARE Zimbabwe

PROJECTS OVERVIEW

Project Name	Project Focus	Geography & Donor	Participants
Takunda	Food, Nutrition, Climate Smart Agriculture Livelihoods, Water, sanitation & hygiene, Animal Health, Village Savings and Lending Associations, Technical Vocational Education Training, Income Generating Activities, Women and Girls Equality	Buhera, Chivi, Mutare Rural, Zaka Districts (United States Government)	308,812
Tayambuka	Food Assistance, Humanitarian response, Food for Assets, Women and Girls Equality and Community Empowerment	Zaka, Bikita (United States Government)	108,300
START4GIRLS	Technical Vocational Education Training Education, Village Savings and Loans Associations, Income Generating Activities, Women and Girls Equality and Community Empowerment	Buhera, Mutare Rural (Global Affairs Canada)	60,253
ECHO El Niño Drought Response	Food Assistance, Nutrition, Protection, Women and Girls Equality and Community Empowerment	Mutare Rural, Gokwe (European Civil Protection and Humanitarian Aid Operations)	24,800
Luxury Brand Crisis Modifier	Water Infrastructure Rehabilitation, Emergency preparedness	Zaka (Luxury Brand UK)	1,887
Support Leading and Learning with Project Management	Education, Capacity Building , Income Generating Activities	Mutare Rural (Project Management Institute Educational Foundation)	1,845

PROJECTS OVERVIEW

Project Name	Project Focus	Geography & Donor	Participants
Sustainable Roots Programme (SRP)	Smart Agriculture, Food and Nutrition Education, Water Access, Community Engagement & Planning, Village Savings and Loans Associations, Women and Girls Equality	Buhera, Tsholotsho (The Light Foundation)	1,507
Community-based Adaptation: Scaling up Community Action for Livelihoods and Ecosystems	Community-based adaptation to extreme weather conditions, women & girls responsive climate resilience, Nature-based solutions for adaptation, Biodiversity protection, Water resource planning, Indigenous knowledge integration with scientific forecasting	Chiredzi, Bikita (International Climate Initiative)	1,416
Enhancing Women's Economic Empowerment (EWEE)	Women's Economic Empowerment, Revolving Fund, Income Generating Activities	Lupane (ECOBANK ZIMBABWE PVT LTD)	617
Shelter Preparedness	Resilient Futures, Women & Girls Equality, Women's Voice & Leadership Humanitarian Action, Emergency preparedness	Chipinge (Volant Trust)	277
Climate Resilient Education Systems	Shelter preparedness and emergency response	Zimbabwe, Kenya, Malawi, Rwanda and South Africa (Centre for Universal Education – Brookings Institute)	239
Sustainable Production of Renewable Energy in Rural areas of Zimbabwe (SUPER)	Scale up biogas digester technology, Reduction of deforestation, Provision clean cooking fuel & Building technical capacity in biogas construction	Chiredzi (Jim Pentecost Foundation)	196

OUR REACH



327 802



196 475



510 149
People

64.3%
of our program participants
were women and girls.

IMPACT BY STRATEGIC FOCUS



385 790

people provided with **access to food, water, and nutrition**



97 547

people assisted in **advancing women's economic justice**



58 554

people supported in **strengthening their resilience and adaptiveness**



32 013

people equipped with **information and access to health services, including sexual and reproductive health resources**



127 246

people empowered to **advance women and girls equality**



135 264

people served through **humanitarian response**



57 332

participated in VSLA's, 15 149 new members **advancing women's economic empowerment**



9 975

people reached by our **education and empowerment activities**

SUSTAINABLE ROOTS PROJECT (SRP)

The Sustainable Roots Program is a 5-year nutrition initiative led by CARE Zimbabwe, in partnership with Nutrition Action Zimbabwe and Organisation of Rural Associations for Progress. Implemented in Buhera and Tsholotsho districts, the program targets over 2,500 households across 10 wards, focusing on smart agriculture, community health education, and women's economic empowerment.

Key Achievements:

- Capacity Building: Trained 96 lead farmers (85 women, 11 men) in smart agriculture, establishing 80 demonstration plots with resilience design structures.
- Farmers Reached: 169 farmers (144 women, 25 men) gained hands-on experience in smart practices through demonstration plots.
- Post-Harvest Handling: 109 households trained in post-harvest handling and storage methods, with 21 lead farmers constructing inverted huts, 5 building solar dryers, and 68 preserving vegetables and fruits.
- Village Savings and Loan Associations (VSLAs): Established 82 new VSLAs, strengthened 150 existing groups, reaching 1,090 participants (978 women, 112 men), promoting household economic resilience and social cohesion.



Women in ward 9 Buhera marking a bio-swale using an A-Frame
©Tonderai Takavarasha /CARE Zimbabwe

SUSTAINABLE PRODUCTION OF RENEWABLE ENERGY (SUPER) PROJECT

Bio Gas stove in the home of one of the project participants in Chiredzi. ©Thamsanqa Maphosa/CARE Zimbabwe



The SUPER project, implemented by CARE Zimbabwe in Chiredzi district, aimed to combat deforestation and support weather change adaptation in Zimbabwe. The project installed 23 biogas digesters (9m³ Carmatec model) serving 46 households (196 people) across the target area.

Key Achievements:

- ✓ Biogas Digesters: 23 digesters installed, benefiting 46 households with a total population of 196 people.
- ✓ Sustainable Energy Solution: The project promoted renewable energy, reducing environmental footprint and supporting weather change adaptation.
- ✓ Shared-Cost Model: Participating households contributed 42% of required materials (bricks, stones, sand, labor), while CARE Zimbabwe provided technical support, cement, and installations.



HUMANITARIAN ACTION

Tayambuka Project - Overcoming Food Insecurity with Dignity

The Tayambuka Project addressed severe food insecurity in rural Zimbabwe during the 2023/24 El Niño-induced drought through a dual-component approach:

Bikita Rural District: Food-for-Assets Component

- Targeted 5,000 vulnerable households across 5 wards
- Participants contributed labor in exchange for food rations (sorghum, pinto beans, vegetable oil).

Achievements:

- 110 gullies reclaimed, protecting 1,250 hectares of arable land
- 127 km of access roads cleared, improving connectivity
- 14 water retention structures built, enhancing drought resilience
- 29 hectares cleared of invasive plant species

Zaka Rural District: Unconditional Food Assistance

- Supported 20,202 households (88,857 beneficiaries) across 20 wards during the peak El Niño period
- Distributed food aid, including:
 - 2,062.81 metric tonnes of sorghum
 - 417.51 metric tonnes of pinto beans
 - 208.75 metric tonnes of vegetable oil
- Prevented vulnerable families from adopting negative coping strategies

Impact on Food Security:

Post-Distribution Monitoring results showed significant progress in household food security, with:

- + Acceptable food consumption increasing from 19% to 67% (48% point improvement).
- + Borderline consumption decreasing from 54% to 39%.
- + Poor consumption falling from 24% to 1%.

The project more than tripled the number of households with adequate food, demonstrating a substantial impact on food security.



Tayambuka project participant wheeling away the food received under the emergency food distribution in Bikita
©Tanaka Aggrey Chitsa/ CARE Zimbabwe

ECHO EL NIÑO DROUGHT RESPONSE

Our emergency response efforts provided life-saving assistance to drought-affected households in rural Zimbabwe (Gokwe North and Mutare rural), focusing on women and girls-responsive food and nutrition assistance, protection services, and health interventions. The project was implemented in close coordination with partners, including Nutrition Action Zimbabwe (NAZ), Padare, District Drought Relief Committees, Department of Social Development, and Ministry of Health and Child Care.

Key Achievements:

- **Food Assistance:** 24,800 people reached with emergency food assistance.
- **Nutrition Interventions:** 32,013 children under 5 screened for acute malnutrition, achieving a 155% increase in screening coverage.
- **Treatment Outcomes:** Achieved an 83% recovery rate for malnourished children, surpassing the target of 80%.
- **Protection Services:** Reached 2,629 individuals (101% of target) with critical support, including:
 - Counseling services: 499 people
 - Psycho-social support: 2,130 individuals
 - Referrals to other service providers: 55 people

Impact:

- **Improved Food Consumption:** Proportion of people with acceptable Food Consumption Scores increased from 12.12% to 74.81%.
- **Increased Awareness:** 81.49% of respondents showed improved knowledge of violence against women and girls (VAWG) services, surpassing the target of 80%.



SHELTER PREPAREDNESS IN ZIMBABWE

Our emergency preparedness efforts strengthened national shelter preparedness in Chipinge Rural District.

Key Achievements:

- **Community-Led Shelter Modelling:** Developed weather-resilient shelter prototypes, including transitional and emergency shelters, tailored to local weather challenges.
- **Automated Weather Station:** Installed in Mutare, providing real-time data on temperature, humidity, wind speed, and direction for weather forecasting and disaster monitoring.
- **Weather-Resilient Shelter Design:** Communities preferred upgrading familiar building techniques, with the highest-rated design being a three-roomed brick shelter with weather-resilient features (scoring 9/10 in community evaluations).

Impact:

- **Strengthened Preparedness:** Enhanced national shelter preparedness and community resilience to weather-related disasters.
- **Community Empowerment:** Demonstrated the effectiveness of combining local weather knowledge with science to inform decision-making on climate-resilient shelter designs.



Two-room brick shelter construction in progress built by the community in Chipinge
©Pauline Hurungudo/CARE

Scalability:

The community-led approach has strong potential for scaling to other weather vulnerable contexts, strengthening preparedness across the humanitarian shelter sector.

Luxury Brand UK Partnership - Zimbabwe Drought Response and Water Access Initiative



Builders examining the work just after completing a piped water point in Zaka Luxury Brand Crisis Modifier.
©Pauline Hurungudo/CARE Zimbabwe

The project aimed to provide sustainable access to clean water for drought-affected communities in Zaka Rural District while strengthening disaster preparedness capacities.

Key Achievements:

- **Water Infrastructure:** Established 3 solar-powered piped water schemes (1.5 km each) and rehabilitated 16 boreholes, serving communities in Wards 16, 21, and 33.
- **Community Impact:** Reduced average distance to clean water sources by 2 km, with some families now accessing water within 75 meters. This has led to:
 - Time savings
 - Enhanced safety
 - Greater opportunities for education and economic empowerment, particularly for women and girls
- **Disaster Risk Reduction:** Built institutional capacity for emergency preparedness through training programs, equipping 41 participants with essential skills for disaster risk management and emergency response.

The project has had a transformative impact on daily life in target communities, improving access to clean water, education, and economic opportunities while reducing the risk of waterborne diseases.

EDUCATION AND YOUTH EMPOWERMENT PROGRAMMING

Supporting Transition, Retention and Training for Girls

The START4Girls project, implemented over five years in 103 secondary schools across Buhera and Mutare districts, successfully concluded in FY25. The project aimed to address educational barriers and create systemic change through multi-sectoral approaches combining educational support, community mobilization, economic empowerment, and skills development.

Key Impact:

Reach

61,483 people

(42,168 females,
19,315 males) across
103 schools



42,168 Females
Reached



19,315 Males
Reached

Education

406 girls transitioned to advanced levels and tertiary education; school dropouts due to child marriage reduced from **22% to 2.4%**



Systems Strengthening

All **103 schools** now offer structured guidance and counseling, with **75%** achieving disability-inclusive infrastructure



Economic Empowerment

8,647 households engaged in savings groups, with **66%** of income supporting girls' education needs.



Skills Development: 239 youth certified in technical trades, with 87% of female trainees breaking barriers in male-dominated fields

Sustainability: Project methodologies incorporated into national curriculum and policy frameworks, ensuring long-term impact.

Legacy:

The project's comprehensive approach has transformed communities, demonstrating that sustainable transformation can be achieved through education, community engagement, and economic empowerment with strong government partnerships. The establishment of community ownership and government integration ensures the project's impact will endure beyond its formal closure.



Start4Girls project participants in a classroom
©Start4Girls

Project Management Skills Development Initiative

The initiative capacitated young people in Mutare district with essential project management skills, fostering long-term capacity through trained mentors and robust support systems. CARE Zimbabwe is partnering with the Ministry of Primary and Secondary Education (MoPSE) to deliver the program.

Key Achievements:

- **Skills Development:** Reached 1,845 students with project management skills and advocacy training through school-based orientation camps.
- **Mentorship:** Trained 70 project management mentors, including teachers and school administrators, in inclusive pedagogies.
- **Income Generating Activities (IGAs):** Distributed 38 IGA starter kits to school clubs, including:
 - Goat production units (11)
 - Broiler farming kits (12)
 - Piggery operations (2)
 - Tuckshop starter kits (4)
 - Other initiatives (sheep production, rabbit production, floor polish, and detergent making)



Start4Girls project participants in a classroom
©Pauline Hurungudo/CARE Zimbabwe

The project empowered students to advocate for their educational and economic rights, demonstrating increased confidence and capacity in leadership roles. The initiative provided practical application opportunities for project management principles, promoting sustainability and community engagement.



Collaborative Research on Education and Climate Change



CARE Zimbabwe launched a 2-year research partnership with the Centre for Universal Education (CUE) at Brookings Institution to address the intersection of weather change and education in Eastern and Southern Africa. This initiative aims to develop practical solutions for weather resilient education systems, building adaptive capacity and positioning CARE Zimbabwe as a regional leader in climate education research.



Key Achievements:

- **Regional Partnership:** Established a research partnership across five countries with seven partner organizations.
- **Research Foundation:** Strengthened through regional mapping, approved work plan, research framework, and toolkit development on innovative climate education teaching methods.
- **Global Visibility:** Achieved through UNGA79 expert panelist role, COP29 Zimbabwe representation, and Echidna Global Scholars Breakfast presentation.
- **Project-Based Learning:** Approaches teach climate knowledge and implement adaptation strategies in schools and communities.



A female student walks to the river to collect water in Mutare Rural.
©Pauline Hurungudo/CARE Zimbabwe

Impact and Future Plans:

- Supports CARE's Resilient Futures and Women and Girls Education impact areas, contributing to Vision 2030 through evidence-based climate education.
- Phase 2 priorities include toolkit finalization, findings dissemination, and exploring funding for geographic expansion.
- The partnership aims to influence policy and practice across Eastern and Southern Africa through evidence-based approaches to climate-resilient education.

Community-based Adaptation: Scaling up Community Action for Livelihoods and Ecosystems (CBA + Scale)

The CBA-SCALE Southern Africa+ project, funded by the German Federal Ministry for the Environment, aims to build weather resilience among vulnerable communities in Southern Africa through inclusive, women and girls responsive, and nature-based adaptation approaches.

CARE is leading a consortium with local partners (ICRISAT and SAFIRE), while IUCN is collaborating with CESVI, and both consortia have critical government partnerships to ensure alignment with national weather adaptation priorities.

Key Achievements:

- **Community Engagement:** Conducted Participatory Climate Vulnerability Assessments engaging 16,423 people in 42 wards across Bikita and Chiredzi Districts, identifying drought as the dominant weather threat.
- **Hybrid Forecasting:** Communities created hybrid forecasts combining scientific data with indigenous knowledge systems, predicting normal rainfall for the 2024/25 season.
- **Community Adaptation Action Plans:** Developed 42 ward-level plans reflecting community priorities, including drought mitigation, land degradation reversal, and ecosystem conservation.
- **Innovation:** Integrated GIS technology at ward level, providing insights on ecosystem management and weather impacts.

The project established a foundation for community-led weather adaptation, prioritizing women's participation and creating locally owned solutions. This approach developed a replicable model for women and girls responsive weather adaptation, positioning the project for effective implementation and scalability across Southern Africa in the coming years.



Farmers and community leaders engage in weather adaptation planning in Chiredzi District
Photographer: ©Mandlethu Ngwenya /CARE Zimbabwe

Takunda Resilience Food Security Activity (RFSA)

The Takunda RFSA program, led by CARE Zimbabwe, aims to establish sustainable, equitable, and resilient food, nutrition, and income security for vulnerable households in Buhera, Mutare, Chivi, and Zaka districts.

Key Achievements:

Agricultural & Food Security:

- Empowered 33,477 farmers (80.9% of target) through 1,019 Farmer Field Business Schools.
- Supported 111 productive gardens with solar-powered boreholes and weirs, benefiting up to 100 households each.
-
- Contributed to a projected grain surplus of 812,000 metric tons.

Clara Masimba, a Takunda Project garden participant from Zaka Rural District.
©Tanaka Aggrey Chitsa



Skills Development and Empowerment

- Trained 710 Lead Farmers (284 men, 426 women) and 699 youth participants (244 male, 455 female) in leadership and entrepreneurship.
- Established three ICT hubs, connecting over 60 youth to stable internet access.
- Provided life skills and employability training, with over 80% of female participants enrolling in male-dominated trades.





Income Generating Activities

- Distributed 2,800 income-generating activity packages and 2,000 TVET start-up kits.
- Formal youth employment doubled from 319 to 646 participants, with self-employment increasing by 80%.



Village Savings and Loan Associations (VSLAs)

- Circulated USD 1,856,540 in loans, with 80% directed to women participants.
- Women owning or controlling productive assets increased to 96%.



Strategic Partnerships

- Engaged 20 new private sector companies, enhancing farmers' access to extension services and contract farming arrangements.
- Partnered with Kutsaga Research Station, Maremare Association, and other organizations to improve market access and agricultural competitiveness.



Health and Nutrition

- Trained 3,446 Lead Mothers in expanded Care Groups, achieving 100% dietary diversity for adolescent girls.
- Constructed 4,085 latrines and implemented Community Score Cards in 34 clinics.

The Takunda RFSA program demonstrates substantial progress in building resilient rural communities, enhancing food security, economic empowerment, and women and girls equality across Zimbabwe

Local Sourcing Initiative - Zimbabwe Pilot



CARE Zimbabwe launched a local procurement pilot in April 2024 to boost community-based suppliers, cut costs, and speed up delivery. The initiative achieved significant results within 14 months.

Key Achievements:

- **Increased Local Spending:** Local supplier spending rose from US\$0 to US\$2.36M, retaining procurement value within project areas.
- **Supplier Engagement:** Registered 81 local suppliers (21 women-led), with 48 actively fulfilling contracts.
- **Faster Delivery:** Local suppliers delivered 61% faster (8.5 days vs. 22 days) and completed 147 transactions.
- **Cost Savings:** Saved US\$189,450 in transport costs.
- **Capacity Building:** Workshops and partnerships with government, regulators, and banks enabled policy integration and sustainability.



CARE Localization team gathering details from a local shop owner in Zaka Rural District. ©Lawrence Zhira/CARE Zimbabwe

The pilot proved that local sourcing is efficient, cost-effective, and sustainable, strengthening local economies, reducing carbon footprints, and advancing CARE's localization goals. Success led to the creation of a CARE Southern Africa Centre of Excellence in Local Procurement, joined by five other countries in the region.

CARE Zimbabwe Financial Performance

CARE Zimbabwe's financial performance in FY2025 showed notable growth, with:

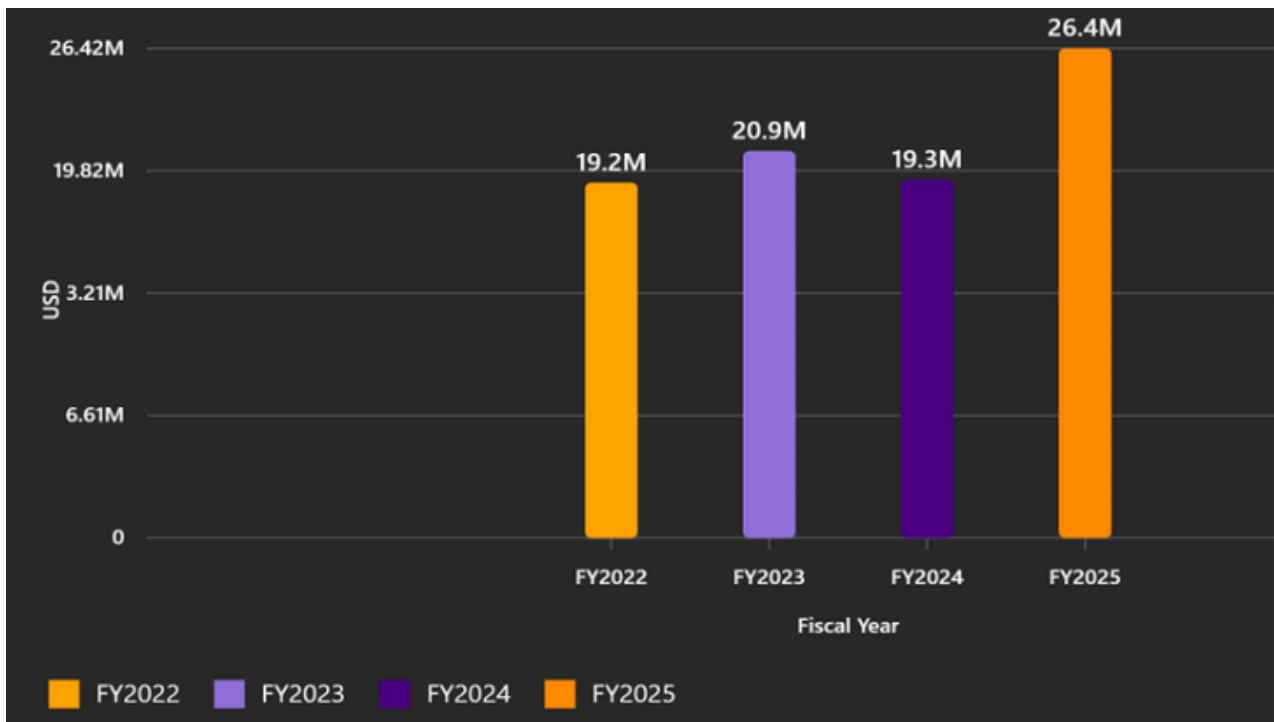
- Total Income: Increased to US\$26.4 million (up from US\$19.3 million in FY2024)
- Expenditure: Rose to US\$26.0 million, reflecting expanded program activities
- Program Spending: 84.5% of resources directed to programs
- Surplus: Achieved a surplus of US\$413,773, driven by controlled cost growth and operational efficiency, enabling greater reinvestment into programmatic impact

Key Drivers:

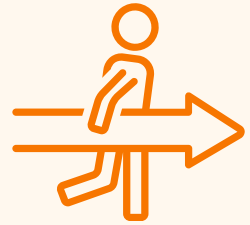
- Higher direct grants from US Government-funded projects and European Commission Humanitarian Aid
- Significant surge in commodity-based indirect revenue (up from US\$1.8 million to US\$5.1 million)

The organization's financial management enabled it to scale up grant-funded activities while maintaining operational efficiency.

FY22 – FY 25 Financial Overview



Looking Ahead



CARE Zimbabwe anticipates a downward trend in funding due to shifts in the NGO operating environment and evolving donor priorities. To adapt, the organization is:

- **Diversifying Funding Streams:** Exploring new funding sources to reduce dependence on traditional donors.
- **Strengthening Local Partnerships:** Building stronger relationships with local partners to enhance sustainability.
- **Enhancing Cost-Efficiency:** Implementing cost-saving measures to maximize impact amid potential financial constraints.

By taking proactive steps, CARE Zimbabwe aims to sustain its impact despite the anticipated funding decline.

Partners and Donors

We extend our sincere gratitude to all partners and donors who supported CARE Zimbabwe's programming during fiscal year 2025. Your continued commitment to our mission has enabled us to reach over 510,149 people with life-changing programming across Zimbabwe.

Government Partnerships and Institutional Collaboration

Our strategic collaboration with government institutions remained a cornerstone of our programming approach throughout fiscal year 2025. We maintained active partnerships with multiple ministries and government departments, ensuring that our programming aligned with national development priorities and contributed to government-led development initiatives.

Ministry of Local Government and Public Works	Ministry of Higher and Tertiary Education, Science, and Development
Ministry of Public Service, Labor and Social Welfare	Ministry of Women Affairs, Community Small and Medium Enterprise Development
Ministry of Primary and Secondary Education	Ministry of Environment, Climate and Wildlife
Ministry of Lands, Agriculture, Water, Climate and Rural Resettlement	Ministry of Health and Childcare
Ministry of Youth, Sport, Arts and Recreation	Ministry of Finance, Economic Development and Investment Promotion

Our CARE Story

CARE Global

Founded in 1945 with the creation of the CARE Package®, CARE is a leading humanitarian organization fighting global poverty. CARE places special focus on working alongside women and girls. Equipped with the proper resources, women and girls have the power to lift whole families and entire communities out of poverty. This year, CARE and partners worked in 109 countries implementing 1,671 poverty-fighting development and humanitarian aid projects and initiatives that reached 167,000,000 people.

CARE works around the world to save lives, defeat poverty, and fight for people, especially women and girls.

For 80 years, CARE has been there, every day and in times of crisis.

We are a trusted partner in creating long-term solutions and a better life for women and families around the world.

This is our commitment to ourselves, our partners, our staff, and the communities we live in and serve. No matter the challenge, we work alongside our neighbors to find solutions that are right for them. In times of conflict or disaster, we share the hardship and the recovery.

CARE is always there, and for as long as we are needed, we always will be. Whenever it's needed, whatever happens, no matter what.

Every day, together with you, CARE saves lives and helps millions of people find the way to a better life worldwide.

CARE Zimbabwe

In 1992, CARE began working in Zimbabwe, responding initially to severe regional drought. CARE has since expanded programming to address longer-term development issues, along with humanitarian emergency response.

CARE contributes to lasting impact at scale in poverty eradication and social justice, in support of the UN Sustainable Development Goals (SDGs). We put women and girls' rights at the center and promote women and girls empowerment.



Pictures from the Field





CARE Zimbabwe

124 Churchill Road Gunhill, Harare,
Zimbabwe
Website: www.carezimbabwe.org
Email: carezim@carezimbabwe.org
Phone: +263 242 708115 / 708047

Follow us on social media for regular updates on our programs, impact stories, and opportunities to engage with our work in Zimbabwe.

© CARE Zimbabwe 2025

All rights reserved. Any reproduction of this publication in full or in part must mention the title and credit CARE Zimbabwe.



Cover and Feature Photos: © CARE Zimbabwe/Various Photographers

Report design and layout: CARE Zimbabwe Communications Team

This annual report reflects CARE Zimbabwe's commitment to transparency, accountability, and evidence-based programming. All data and impact figures have been verified through our monitoring and evaluation systems and external verification processes where applicable